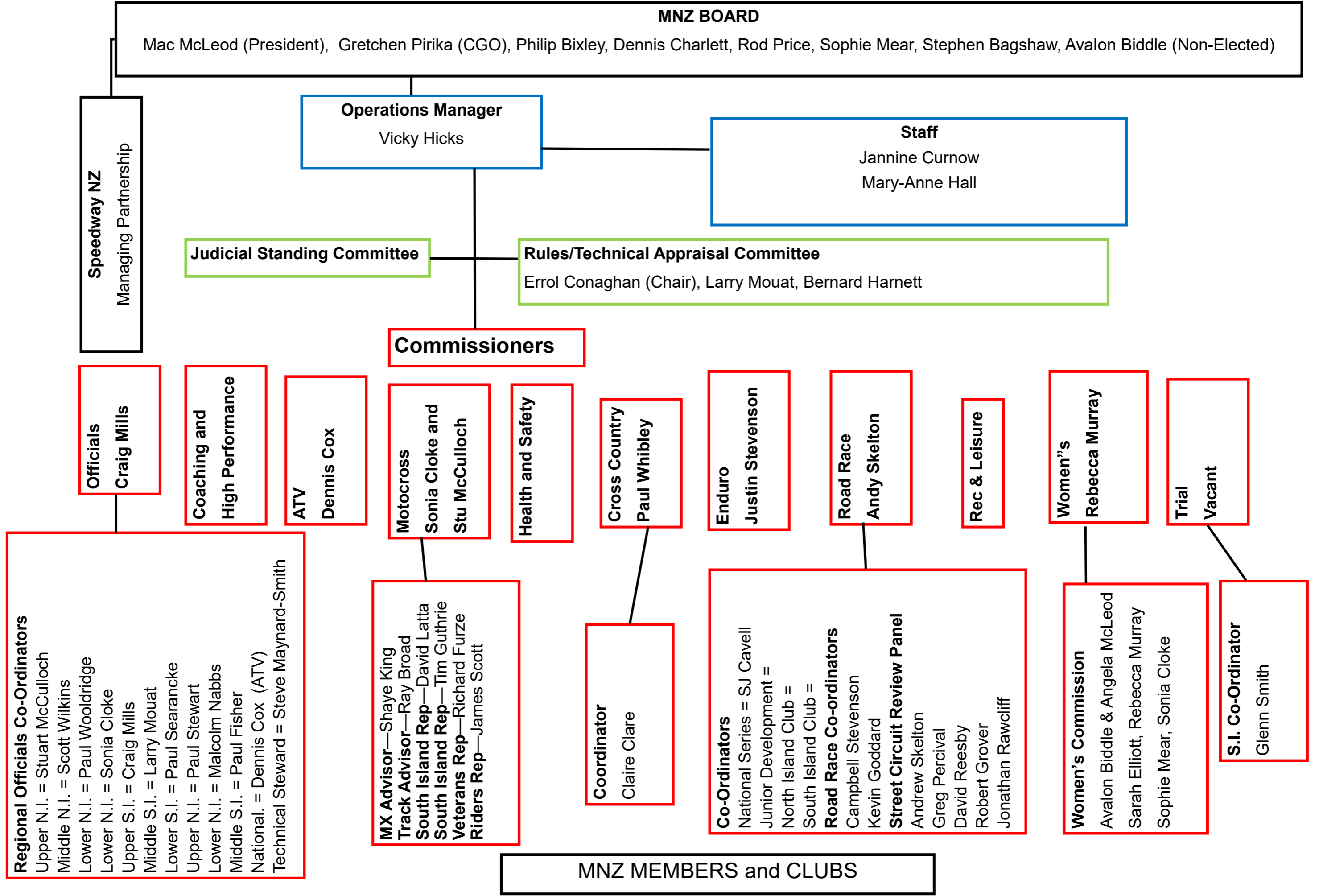


# Motorcycling New Zealand—Organisation Structure



## Contact Index—Motorcycling New Zealand Organisation Structure

### Members:

Riders, Associate Members, Officials and Honorary and Life Members

### Clubs:

All Affiliated clubs can be found on the MNZ website—<https://mnz.co.nz/>

### BOARD:

President	Mac McLeod	<a href="mailto:mnzpresident@mnz.co.nz">mnzpresident@mnz.co.nz</a>
CGO	Gretchen Pirika	<a href="mailto:mnzcco@mnz.co.nz">mnzcco@mnz.co.nz</a>
Off Road (North Island)	Sophie Mear	<a href="mailto:mnzorni@mnz.co.nz">mnzorni@mnz.co.nz</a>
Off Road (South Island)	Gretchen Pirika	<a href="mailto:mnzorsi@mnz.co.nz">mnzorsi@mnz.co.nz</a>
Road (North Island)	Vacant Position	<a href="mailto:mnzrni@mnz.co.nz">mnzrni@mnz.co.nz</a>
Road (South Island)	Dennis Charlett	<a href="mailto:mnzrsi@mnz.co.nz">mnzrsi@mnz.co.nz</a>
South Island Rep	Rod Price	<a href="mailto:mnzsir@mnz.co.nz">mnzsir@mnz.co.nz</a>
North Island Rep	Philip Bixley	<a href="mailto:mnznir@mnz.co.nz">mnznir@mnz.co.nz</a>
Non-Elected	Avalon Biddle	

### STAFF:

Operations Manager	Vicky Hicks	<a href="mailto:gmo@mnz.co.nz">gmo@mnz.co.nz</a>
Office Manager	Jannine Curnow	<a href="mailto:jannine@mnz.co.nz">jannine@mnz.co.nz</a>
Administration	Mary-Anne Hall	<a href="mailto:maryanne@mnz.co.nz">maryanne@mnz.co.nz</a>
Receptionist	Vacant	<a href="mailto:admin@mnz.co.nz">admin@mnz.co.nz</a>

### COMMISSIONERS:

ATV	Dennis Cox	<a href="mailto:admin@mnz.co.nz">admin@mnz.co.nz</a>
Cross Country	Paul Whibley	<a href="mailto:mnzxcc@mnz.co.nz">mnzxcc@mnz.co.nz</a>
Enduro	Justin Stevenson	<a href="mailto:mnzec@mnz.co.nz">mnzec@mnz.co.nz</a>
Motocross	Sonia Cloke & Stu McCulloch	<a href="mailto:mnzmxcc@mnz.co.nz">mnzmxcc@mnz.co.nz</a>
Officials	Craig Mills	<a href="mailto:officials@mnz.co.nz">officials@mnz.co.nz</a>
Recreation and Leisure	Vacant	
Road Race	Andrew Skelton	<a href="mailto:mnzrrc@mnz.co.nz">mnzrrc@mnz.co.nz</a>
Trial	Vacant	<a href="mailto:mnztc@mnz.co.nz">mnztc@mnz.co.nz</a>
Women's	Rebecca Murray	<a href="mailto:mnzwc@mnz.co.nz">mnzwc@mnz.co.nz</a>

For all Committee's, Co-Ordinators and Panels, contact should be made to the direct reports as shown in the structure