

8.1 Protective Clothing:

Protective clothing as specified in this chapter is to be worn by all competitors at all MNZ permitted Road race events, including Training and Have a Go Day events. Protective clothing may be examined by the Steward or their deputy prior to being used in each event. Once examined no alterations or substitutions can be made to the clothing or helmet without the examiner's approval and re-examination. The Steward of the event shall have final say on any safety gear presented and shall not allow any rider to take part in the event if the safety gear does not conform to the required standards. The minimum standard of protective clothing for events shall be as follows in this chapter.

Road Race New Zealand Championship Meetings covering classes Appendix C, F MUST use Airbag Leather Suits, containing compliant and operational airbag vests/suits from 1 January 2027.

8.1a Riders shall ensure that all protective clothing is, as a minimum standard, as listed in this chapter. Chest and back protectors are to be worn under the competitor's leather suit. Helmet details must be shown in the appropriate section in the rider's logbook.

8.1b Riders with long hair **must tie it up, ensuring it is not free flowing out of their helmet or race suit.**

8.1c Road Racing, Road Hill Climbs & Record Attempts:

- Safety Helmets - as per rule 8.2a
- Boots - as per rule 8.3
- Clothing - Complete suits of leather or Kevlar, one piece is recommended, however 2 pieces with a zip together system is allowed provided they are zipped together at all times and must have a concealed zip around waist, not just a small zip at the back. Suits must be in good condition with no rips, tears or holes that could compromise the safety of the suit. No additional items or accessories unless otherwise mentioned in this chapter, may be worn or carried inside the clothing that could be damaged or cause harm to the wearer i.e. cell phones, transponders, tools, camera or data logging items. Knee sliders are an optional fitment, but if fitted must be of a material that does not cause sparks or drags when in contact with the track. Titanium knee sliders are banned in all MNZ permitted events. Cordua or road riding gear is not permitted at Road Race events but may be worn by training and Have a Go riders in the slower entry level class only, at the discretion of the Steward of the event or as detailed in the event supplementary regulations.
- Back Protectors - A certified back protector must be worn at all times. The standard for back protectors is EN1621-2 [Level 1]. Shoulder, elbow, knee etc protection is EN1621-1 [Level 1].
- Gloves - Leather is only approved. Gloves must be in good condition with no tears or holes that could compromise the safety of the glove. A retaining strap should hold the gloves onto the hand and provide good fitment at all times.
- Eye Protection - as per rule 8.2i
- Chest Protectors - A certified chest protector of composite material must be worn at all times. This is compulsory for all solo competitors and discretionary for sidecar crews. The current standard required for Chest Protectors is prEN1621-3, level 2 (sometimes written as EN1621-3 level 2).

All protective equipment such as Chest Protectors and Back Protectors must be worn inside all approved suits for Road Racing.

8.1d Super Motard classes on circuits with Motard dirt inclusions only:

No competitor may practice, start or compete in any Super Motard Competition unless wearing the following:

- Helmet - Full Face or Motocross type as per rule 8.2a.
- A one piece leather suit or a two piece must have concealed zip around waist.
- A back protector, chest protector and gloves as per 8.1c above.
- Goggles or Visors as per rule 8.2i.
- Motocross boots are approved, as per rule 8.3.

For Super Motard classes being run solely on fully sealed circuits then 8.1b is applicable 8.1c is only applicable for Circuits with purpose built Motard section/(s).

8.1e Helmets:

At all MNZ permitted events approved design Motorcycle helmets will be worn when any rider or passenger is astride a machine which is in motion, whether these are 2, 3 or 4 wheeled vehicles, except for the official "Ride By", which

precedes the racing proper. This will take place at a slow and sedate speed behind the Start Car.

Any rider guilty of abusing this "ride by" with inappropriate riding style such as wheel stands and jumps, can, at the discretion of the Meeting Steward, be banned from competing at that meeting and no entry fee will be refunded.

- 8.2 **Competition Helmet Standards:** All new helmets available in New Zealand are manufactured overseas. These are made to various standards.

The following standards are acceptable for helmets for use in MNZ events:

Road	AS/NZS 1698:2006
Europe	ECE 22-05, 'P' ECE 22-06, 'P'
Japan	JIS T 8133:2015
USA	SNELL M2015 SNELL M2020D SNELL M2020R

FIM Racing Homologated Helmet
(label typically affixed on chin strap)

Only helmets of single shell construction are permitted for road racing events.

Two piece or flip top helmets may be used for have-a-go or track introduction days.

The 'NZ Ag Hat' which is a Motorcycle Helmet complying with NZS8600 is NOT approved for ANY form of competitive motorcycling or for the transit of persons above the speed of 30kph.

For International events the following standards apply:

Europe	ECE 22-05, 'P' ECE 22-06, 'P'
Japan	JIS T 8133:2015
USA	SNELL M2015 SNELL M2020D SNELL M2020R

FIM Racing Homologated Helmet
(label typically affixed on chin strap)

- 8.2a All helmets manufactured, as evidenced by the manufacturers date of manufacture labelling, more than 10 years prior to the date of an event may not be used. Where no date of manufacture is visible on the helmet the onus is on the competitor to prove that the helmet is less than 10 years old.
- 8.2b Helmets manufactured with standards other than those approved can only be used in competition after approval by MNZ.
- 8.2c Approval will be given upon receipt of a certificate from the Standards Association of New Zealand or a competent authority (recognised by MNZ) stating that such a standard meets one of the approved standards.
- 8.2d The Steward or his/her deputy shall not allow any rider to take part in the event if the safety gear requirement does not conform to the required standards to enter the event. This includes, compliance, damage or not fit for purpose, but not limited to either.
- 8.2e Only helmets with a strap retaining system are permitted. The strap must be fastened any time the helmet is required to be worn.
- 8.2f Each competitor will be required to prove good fit of his/her helmet.
- 8.2g All helmets, regardless of approved marks, must provide temple protection (commonly known as 'Jet' or 'Open Face' or 'Full Face').
- 8.2h Helmet peaks, if worn, must be of flexible material attached by press studs, straps, plastic screws, or tape. The peak must be capable of being torn from the helmet in the event of an accident. Helmets provided with metal screw attachments as original will be accepted, as well as metal screw replacements, provided the original mounting in the helmet is not modified in any way.
- 8.2i Face shields/visors must be of an approved flexible plastic or moulded material. Perspex face shields/visors are not permitted. Face shields/visors should be in the 'closed' position; they may be opened sufficiently to aid ventilation but must protect eyes from flying objects during racing, qualifying & practice. Face shields/visors may be fully open during the end of session slow down lap, pit lane and off-track areas. Goggles must be worn on all motocross style helmets

during racing, qualifying and practice. They may be removed during the end of session slow down lap, in pit lane and off-track areas.

- 8.2j No helmet will be drilled, screwed or taped other than as per original manufacture, or helmet manufacturer's instructions. The rider is required to provide proof that it is a helmet manufacturer's instruction.

- 8.2k Polycarbonate helmets that have been painted are banned from use in competition.

8.2l **Care of your helmet:**

YOUR POLYCARBONATE HELMET MUST NOT BE PAINTED.

Make sure your helmet is not subject to solvents or fuel in storage or transport to and from and during meetings.

Solvents of any kind must not be used to clean your helmet – use soap and water.

Any sticker should only be placed on a helmet by using the adhesive provided on the sticker.

Do not place your helmet where it can be subject to sunlight, e.g. car windows, etc.

MNZ strongly recommends, on advice from manufacturers, that you do not use a helmet for more than three years.

Make sure your helmet is not dropped, or subjected to abuse in any way. If this happens have it re-examined by a qualified person or replace it.

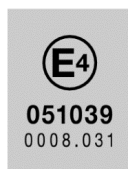
- 8.2m a. No items may be fitted to the helmet that could interfere with the structural integrity of the helmet in the event of an accident. A helmet is made to provide protection. A helmet is not to be used as a platform to attach foreign objects.
- b. Tear offs, Roll offs, anti fog systems and similar may be fitted to goggles/visors if approved for the event. All other accessories are strictly forbidden on any part of the riders head protection.
- c. Headphones, microphones or any other form of communication **or recording** equipment must not be fitted **or adhered to any part of** the helmet. **Helmet cameras are not permitted unless the camera is integrated into the helmet, by design of the manufacturer.**
- d. The Steward of the event has the right to reject the use of any helmet or any other accessory not covered elsewhere in this rule that they consider a safety concern.

International Helmet Standards

ECE 22-05 (P, NP or J)

ECE 22-06 (P, NP or J)

The ECE mark consists of a circle surrounding the letter E followed by the distinguishing number of the country which has granted approval.

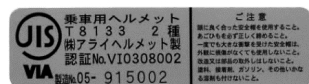


Below the letter E, the approval number should always begin with 05. Below the approval number is the serial production number. (Label on retention system or comfort interior.)

E1 for Germany
E2 for France
E3 for Italy
E4 for Netherlands
E5 for Sweden
E6 for Belgium
E7 for Hungary
E8 for Czech Republic
E9 for Spain
E10 (vacant)
E11 for UK
E12 for Austria
E13 for Luxembourg
E14 for Switzerland
E15 (vacant)
E16 for Norway

E17 for Finland
E18 for Denmark
E19 for Romania
E20 for Poland
E21 for Portugal
E22 for the Russian Fed.
E23 for Greece
E24 for Ireland
E25 for Croatia
E26 for Slovenia
E27 for Slovakia
E28 for Belarus
E29 for Estonia
E30 (vacant)

E31 for Bosnia and Herzegovina
E32 for Latvia
E34 for Bulgaria
E37 for Turkey,
E40 for Macedonia
E43 for Japan,
E44 (vacant)
E45 for Australia,
E46 for Ukraine
E47 for South Africa
E48 for New Zealand.



JIS T 8133:2015



SNELL M2015
SNELL M2020D
SNELL M2020R

- 8.3 Footwear: For speed events, boots must be well constructed, either all leather or leather uppers or leather substitute and solid rubber sole not less than 25cm from the inner sole to the top of the boot.

- 8.3a Road racing sidecar passengers are required to wear footwear to a minimum of gym type boots (i.e. affording ankle protection).